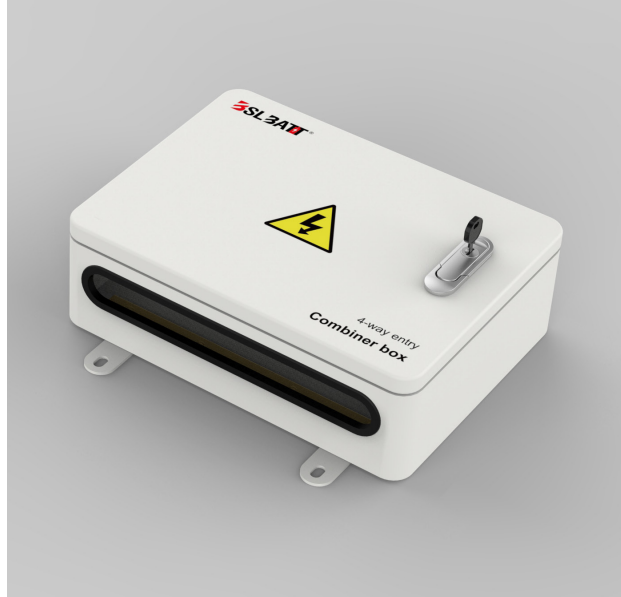


## BSL LV COMBINER BOX

This LV battery combiner box is a core component designed for low-voltage energy storage systems. It is designed to safely and efficiently connect up to 8 independent low-voltage battery packs (groups) in parallel, thereby flexibly expanding the total capacity of the system and improving power supply reliability. It simplifies the wiring connection of the battery system and provides key safety protection. It is an ideal choice for building modular, scalable, and highly reliable low-voltage energy storage systems.



### Specifications

Model			
-------	---	--	---

Voltage Range	≤1000V (DC)		
Current Range	≤325A		
Number of Inputs	8	6	4
Dimensions(mm)	580×270×117.7	480×270×117.7	360×270×117.7
Weight(Kg)	8.32	6.81	5.35
Terminal Type	SC25-8/SC35-8/SC50-8/SC70-8		
Operating Temperature	-10°C to 50°C		
Protection Rating	IP20 (Indoor)		
Enclosure Material	SPCC + Powder Coating		
Fuse Ratings	100A/125A/130A/150A/175A/200A/225A/250A/275A/300A/325A		

### High Scalability and Flexibility

- Supports multi-channel access: Up to 8 low-voltage battery inputs can be connected and managed simultaneously to meet the energy storage system configuration with different capacity requirements.
- Modular expansion: Users can start with a small number of batteries and gradually expand the system capacity according to the initial investment and later needs to protect the initial investment.

### Wide Compatibility

- Specialized for low-voltage systems: Optimized design for common low-voltage battery systems (such as 12V/24V/48V, etc.).
- Compatible with a variety of batteries: Compatible with BSLBATT's mainstream low-voltage lithium batteries such as wall-mounted series and rack series.

